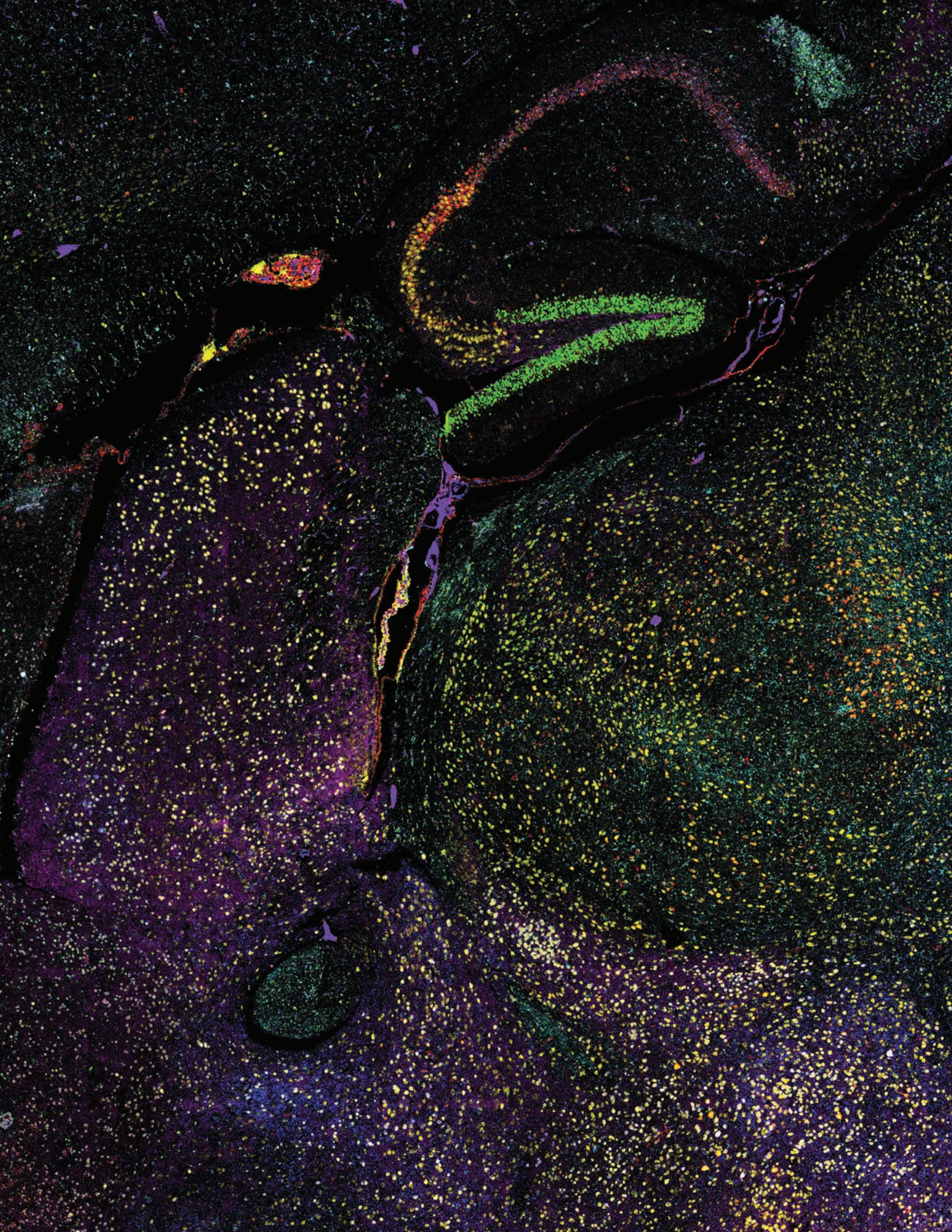


**BRUKER SPATIAL BIOLOGY**

# **CosMx<sup>®</sup> Spatial Molecular Imager**

High Fidelity Spatial Exploration of the Single-Cell Whole Transcriptome

FOR RESEARCH USE ONLY. NOT FOR USE IN DIAGNOSTIC PROCEDURES.



---

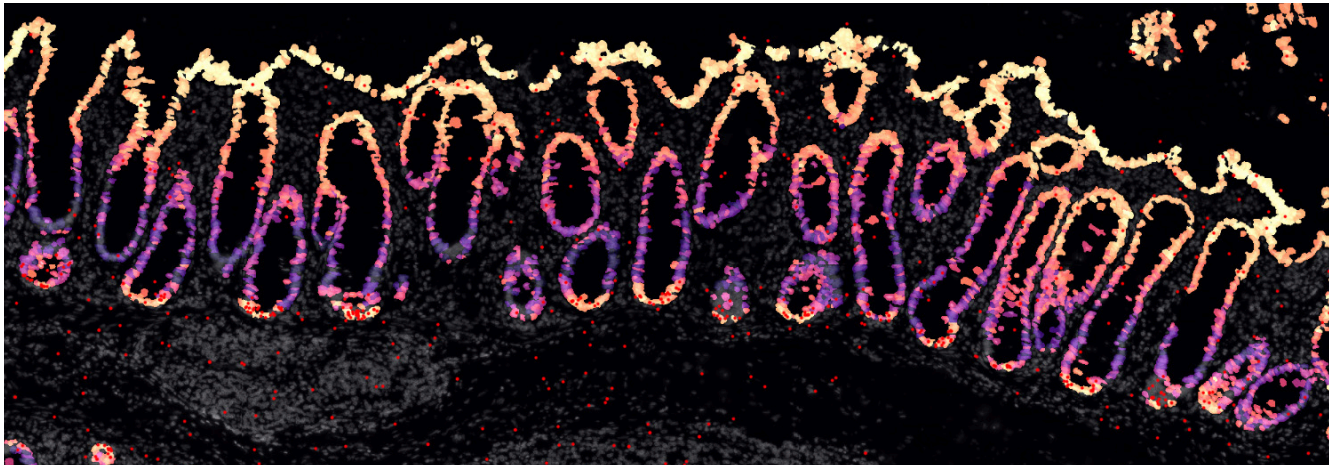
# CosMx<sup>®</sup> SMI

Elevate your single-cell research

---

The CosMx Spatial Molecular Imager (SMI) delivers high-plex in situ imaging at subcellular resolution with the highest plex, up to 19,000 RNA targets and unbiased sensitivity, including multiomic same cell workflow and an integrated spatial informatics solution, the AtoMx<sup>®</sup> SIP.

## An Unmatched Single-Cell Spatial Solution



### Highest Plex Panels

More cell types, cell states and biological pathways

### Multiomic

Same cell, same slide for RNA and Protein

### Any Sample Type

Real-world FFPE, fresh frozen, TMA, organoids and more

### High Resolution

Single-cell analysis at subcellular resolution

### Simple & Flexible

Easy-to-use workflow with customizable panels and scan area



### AtoMx<sup>®</sup> Spatial Informatics Platform

An integrated informatics solution, AtoMx SIP enables scalable data analysis, storage, and sharing

---

## The power of high fidelity, single-cell spatial imaging

High fidelity is the combination of the highest plex, unmatched sensitivity and the most accurate cell segmentation.

### Highest Plex

The first and only spatial platform to image the entire protein-encoding transcriptome inside every single cell.

### Unmatched Sensitivity

Leverage unmatched detection efficiency to deliver the highest number of transcripts and unique genes per cell.

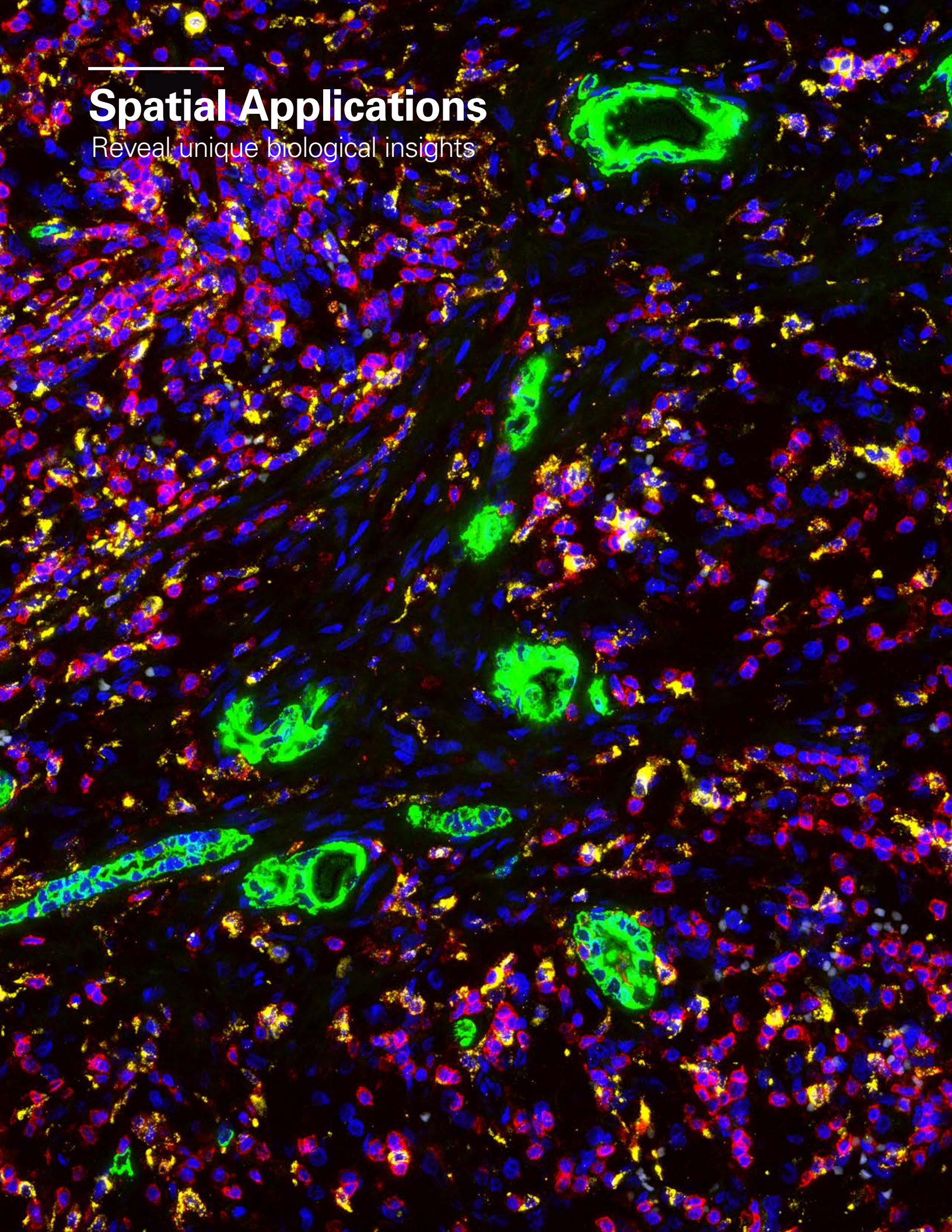
### Most Accurate Cell Segmentation

Best-in-class AI algorithms for the most accurate definition of cell boundaries and assignment of transcripts to individual cells.

---

# Spatial Applications

Reveal unique biological insights

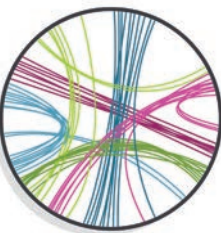
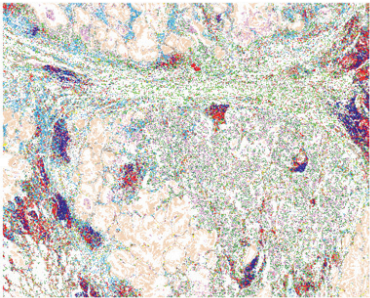


Single-cell data generated from intact fresh frozen (FF) or FFPE tissues using the CosMx Spatial Molecular Imager reveals deep biological insights from a single experiment.



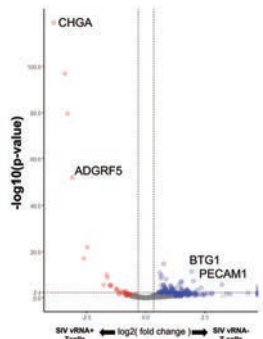
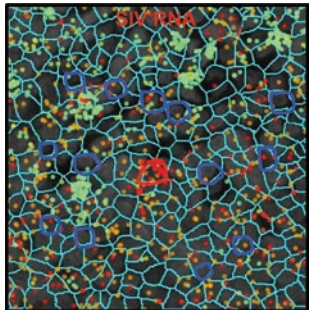
**Cell Atlasing / Cell Typing**

Discover and map cell types using expression profiles of known RNA and protein targets.



**Biomarker Discovery**

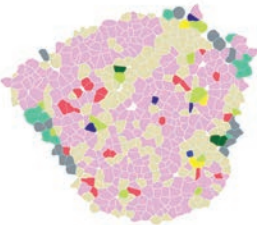
Reveal differential gene expression and pathways in the same cell types depending on their spatial location.



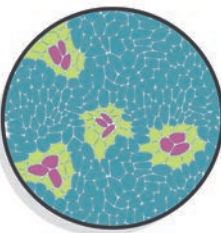
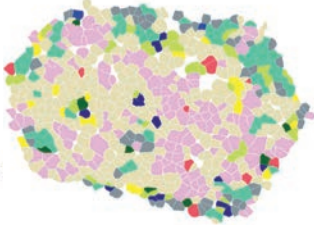
**Disease State**

Visualize and quantify molecular (RNA / protein) and cellular organizational changes in a tissue.

**Normal Islets of Langerhans**

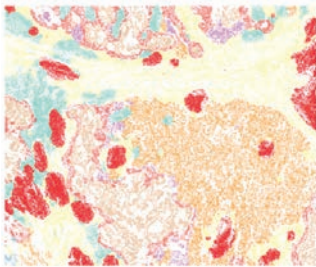


**Diabetic Islets of Langerhans**



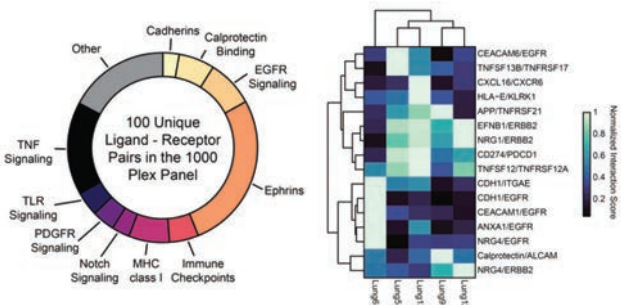
**Tissue Microenvironment**

Understand cellular neighborhoods by examining individual cells and their interacting neighboring cells.



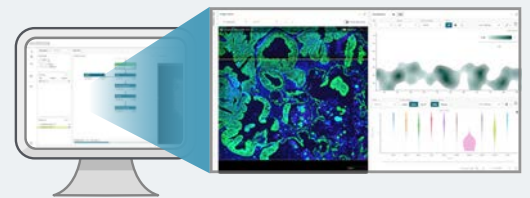
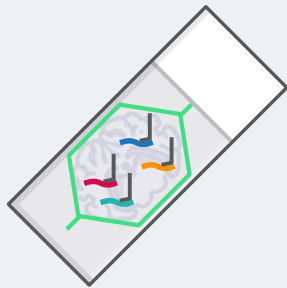
**Ligand-Receptor Interaction**

Analyze expression and interactions of up to 100 classic ligand-receptor pairs between interacting cells.



# Easy to Use

## Complete Sample-to-Insight Solution



1

2

3

### Simple Sample Preparation

A fast and easy-to-use workflow

### Automated Imaging

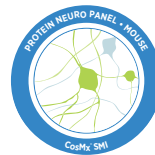
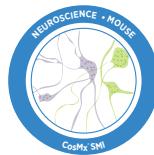
Robust single molecule  
in situ hybridization  
chemistry

### Integrated Data Analysis

Comprehensive visualization  
and data analysis, scalable  
computing and storage with  
easy data sharing

## Panel Assays

Flexible options to cover your research needs



CosMx®  
Whole  
Transcriptome  
Panel  
(RNA,  
~19,000 plex)

CosMx® 6K  
Discovery  
Panel  
(RNA,  
6000 plex)

CosMx®  
Human  
Universal Cell  
Characterization  
Panel  
(RNA, 1000 Plex)

CosMx®  
Mouse  
Neuroscience  
Panel  
(RNA,  
1000 Plex)

CosMx®  
Custom RNA  
Barcoding  
Add-on Panel

CosMx®  
Mouse  
Neuroscience  
Panel  
(Protein,  
64 Plex)

CosMx®  
Human  
Immunology  
Panel  
(Protein,  
64 Plex)

CosMx®  
Custom  
Protein  
Add-on  
Panel

# Integrated Spatial Informatics Solution



## AtoMx® Spatial Informatics Platform

A complete cloud-based spatial biology informatics solution for fast and secure analysis and visualization of CosMx data anytime, anywhere.



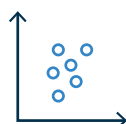
### Spatial Platform Integration

Stream image and count files seamlessly from CosMx SMI into AtoMx SIP.



### Data Management

Securely store, manage, and export spatial multiomics data around the globe.



### Analyze & Visualize Spatial Data

Perform secondary analysis and tertiary analysis with preconfigured modules and data analysis pipelines.



### Custom Analysis

Edit pre-built modules and pipelines OR build custom modules and pipelines to analyze spatial data to fit your needs.\*



### Security & Compliance

Single Sign-On authentication backed by standard-compliant data encryption for data-in-transit and data-at-rest through Amazon Web Services.

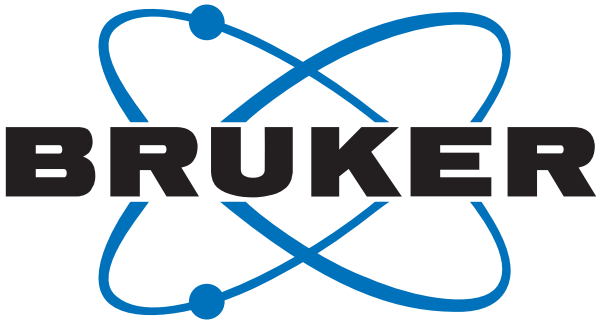
## AtoMx Analysis Modules

Foundational Analysis Modules	Spatial Analysis Modules	Analysis Pipeline	Custom Analysis Modules
QC	Ligand-Receptor	Foundational – RNA	User-Defined
Normalization	Nearest Neighbor	Foundational – Protein	
UMAP	Spatial Network		
Cell Typing	Cell Proximity Analysis		
PCA	Differential Expression		
Spatial Clustering			

\* R scripts supported for CosMx SMI

# Instrument Information

Product	Description	Catalog Number
CosMx Spatial Molecular Imager	CosMx Spatial Molecular Imager Instrument. Includes 1 year manufacturers warranty.	CMX-SMI-1Y
	CosMx Spatial Molecular Imager Instrument. Includes 1 year manufacturers warranty with 1 additional year of Platinum service contract	CMX-SMI-2Y-PLAT
	CosMx Spatial Molecular Imager Instrument. Includes 1 year manufacturers warranty with 2 additional years of Platinum service contract.	CMX-SMI-3Y-PLAT
	CosMx Spatial Molecular Imager Instrument. Includes 1 year manufacturers warranty with 3 additional years of Platinum service contract.	CMX-SMI-4Y-PLAT
	CosMx Spatial Molecular Imager Instrument. Includes 1 year manufacturers warranty with 4 additional years of Platinum service contract.	CMX-SMI-5Y-PLAT



**Bruker Spatial Biology** | For more information, visit [nanosttring.com/cosmx](https://nanosttring.com/cosmx)

<b>Bruker Spatial Biology, Inc.</b>			<b>Sales Contacts</b>		
3350 Monte Villa Parkway, Bothell, WA 98021	T (888) 358-6266 F (206) 378-6288	<a href="https://nanosttring.com">nanosttring.com</a> <a href="mailto:customerservice.bsb@bruker.com">customerservice.bsb@bruker.com</a>	North America EMEA	<a href="mailto:nasales.bsb@bruker.com">nasales.bsb@bruker.com</a> <a href="mailto:emeasales.bsb@bruker.com">emeasales.bsb@bruker.com</a>	Asia Pacific & Japan Other Regions <a href="mailto:apacsales.bsb@bruker.com">apacsales.bsb@bruker.com</a> <a href="mailto:globalsales.bsb@bruker.com">globalsales.bsb@bruker.com</a>

**FOR RESEARCH USE ONLY. Not for use in diagnostic procedures.**  
© 2025 Bruker Spatial Biology, Inc. All rights reserved. NanoString, NanoString Technologies, the NanoString logo, CosMx, and AtoMx are trademarks or registered trademarks of Bruker Spatial Biology, Inc., in the United States and/or other countries. Any other trademark that appears in this document is the property of its respective owner.