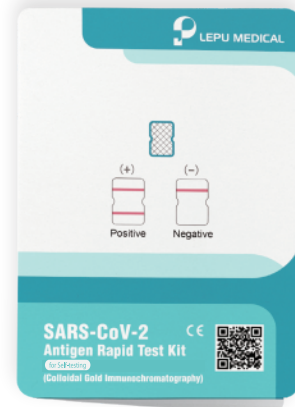


# SARS-CoV-2

## Antigen Rapid Test Kits **for Self-testing**

*(Colloidal Gold Immunochromatography)*

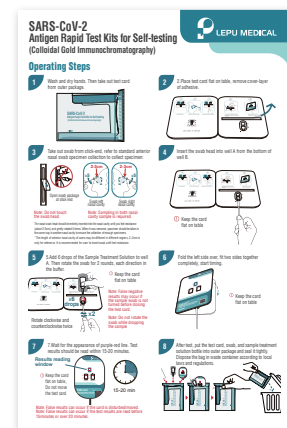




Swab



buffer



Operation Card

This product is a rapid, lateral flow immunoassay intended for the qualitative detection of SARS-CoV-2 nucleocapsid antigens from anterior nasal swabs that are self-collected by an individual aged 18 years or older or are collected by an adult from an individual younger than 18 years old. This test is intended for use in individuals with symptoms or other epidemiological reasons to suspect a COVID-19 infection. This product is intended to be used as an aid in the diagnosis of SARS-CoV-2 infection.

## Product Feature



Non-invasive



Simple to use



No prescription needed



Rapid, get result in 15 minutes



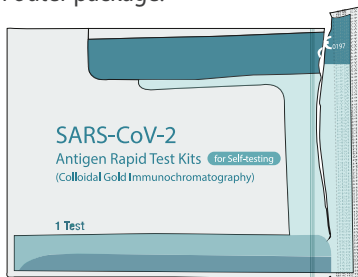
Stable, with high accuracy



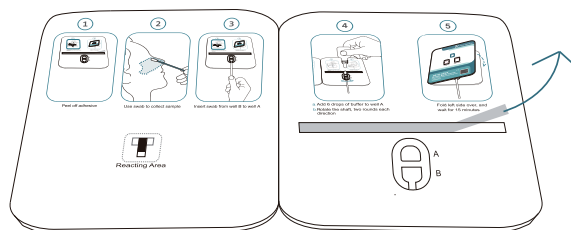
Inexpensive, cost-efficiency

## Operating Steps

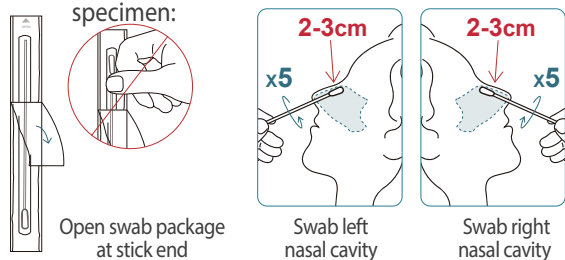
- 1 Wash and dry hands. Then take out test card from outer package.



- 2 Place test card flat on table, remove cover-layer of adhesive.



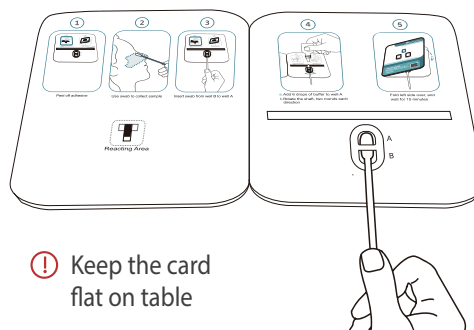
- 3 Take out swab from stick-end, refer to standard anterior nasal swab specimen collection to collect specimen:



**Note:** Do not touch the swab head. **Note:** Sampling in both nasal cavity sample is required.

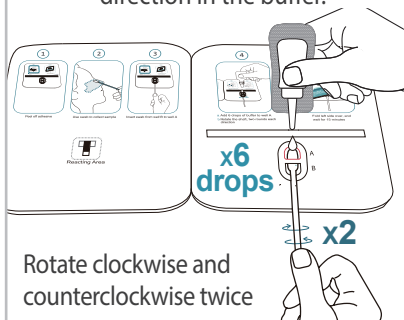
The nasal swab head should be entirely inserted into the nasal cavity until you feel resistance (about 2-3cm), and gently rotated 5 times. When it was removed, specimen should be taken in the same way in another nasal cavity to ensure the collection of enough specimens. The length of anterior nasal cavity of users may be different in different regions, 2~3cm is only for reference. It is recommended for user to insert swab until feel resistance.

- 4 Insert the swab head into well A from the bottom of well B.



⚠ Keep the card flat on table

- 5 Add 6 drops of the Sample Treatment Solution to well A. Then rotate the swab for 2 rounds, each direction in the buffer.

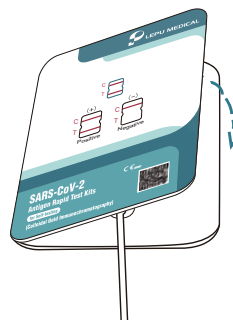


⚠ Keep the card flat on table

**Note:** False negative results may occur if the sample swab is not turned before closing the test card.

**Note:** Do not rotate the swab while dropping the sample

- 6 Fold the left side over, fit two sides together completely, start timing.

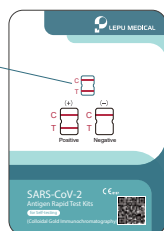


⚠ Keep the card flat on table

- 7 Wait for the appearance of purple-red line. Test results should be read within 15-20 minutes.

### Results reading window

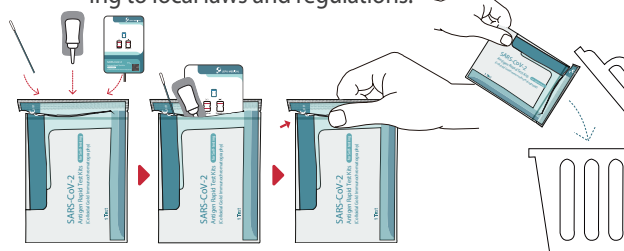
⚠ Keep the card flat on table, Do not move the test card



15-20 min

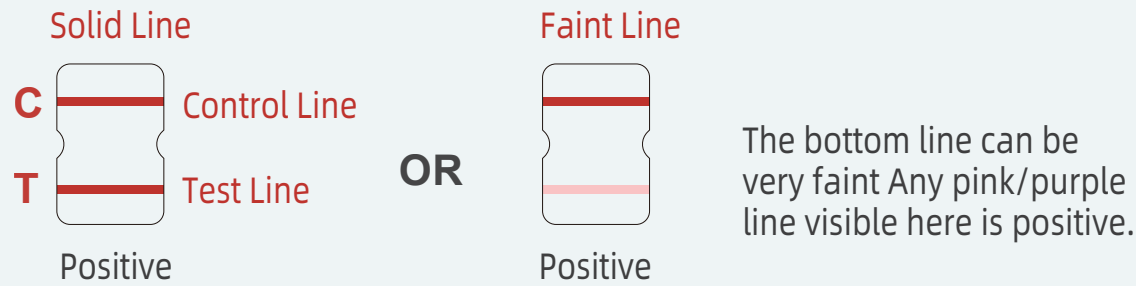
**Note:** False results can occur if the card is disturbed/moved.  
**Note:** False results can occur if the test results are read before 15 minutes or over 20 minutes.

- 8 After test, put the test card, swab, and sample treatment solution bottle into outer package and seal it tightly. Dispose the bag in waste container according to local laws and regulations.

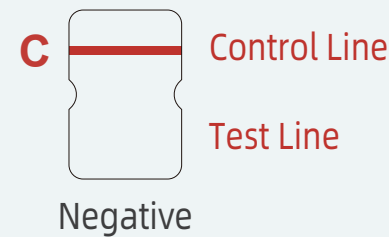


# Interpretation of Test Results

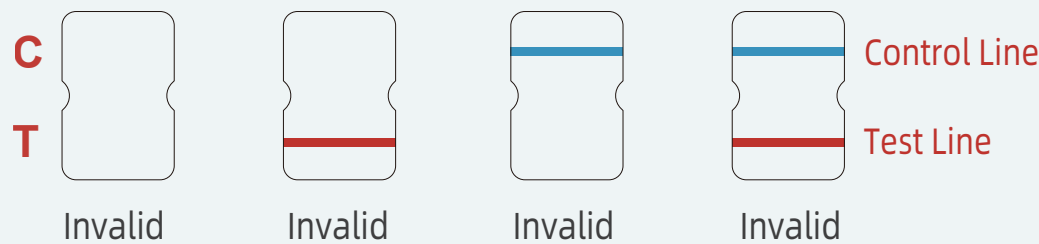
·Positive (+): A purple-red band appears in the Control Line (C) and Test Line (T).



·Negative (-): Only the Control Line (C) shows a purple-red band. No purple-red band appears in the Test Line (T).



·Invalid: If “no purple-red band appears in Control Line (C)” and “a blue band appears in the Control Line (C)” , it indicates that the operation process is incorrect or the test paper has been damaged. In this case, please read the instruction manual carefully again and retest with a new test paper. If the problem persists, please stop using this batch of products immediately and contact your local supplier.





Product specifications



1 Test



5 Tests



10 Tests



25 Tests



Self-testing



Home



Test Site



Airport



Hotel



Corporation



Mass Screening